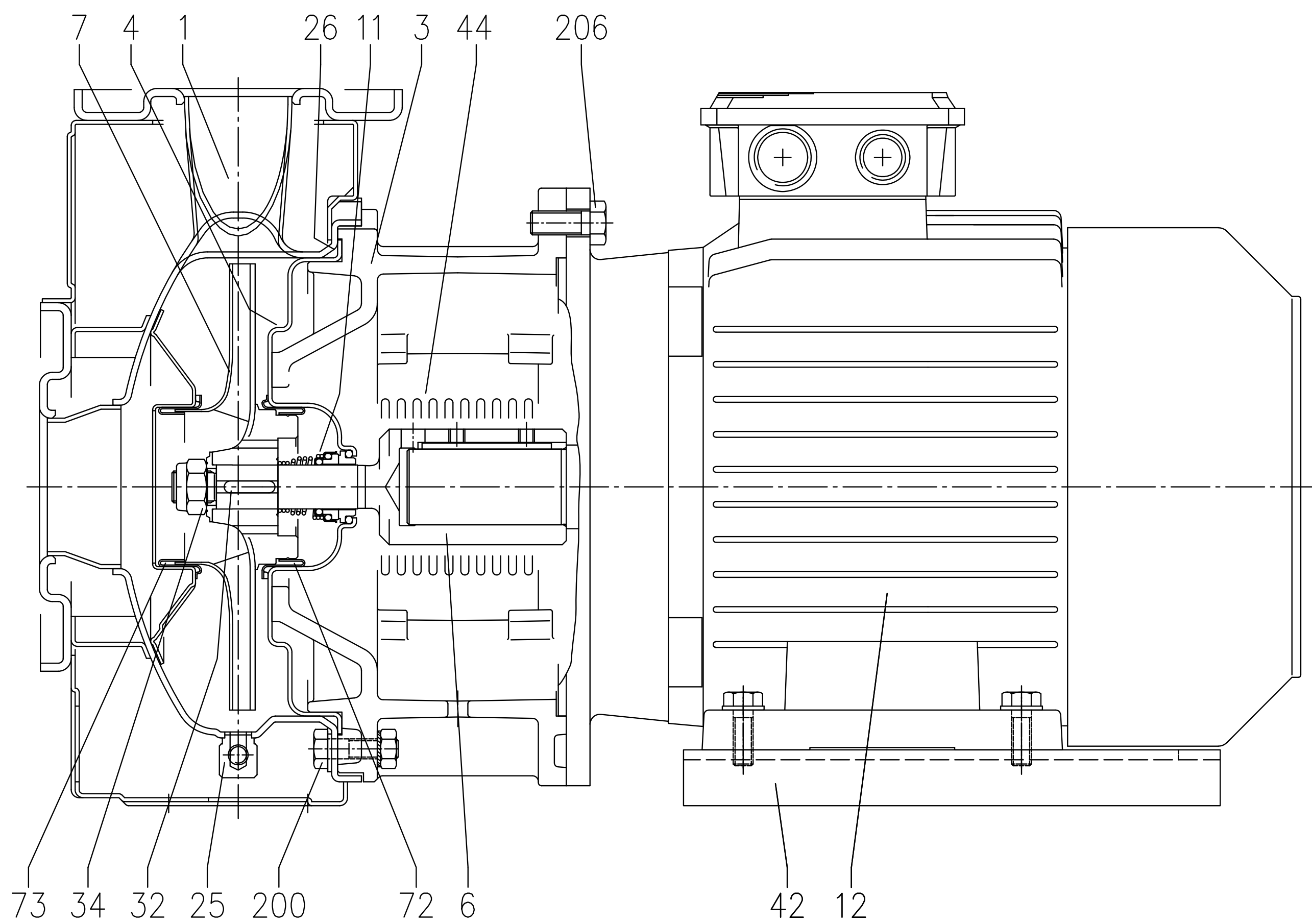
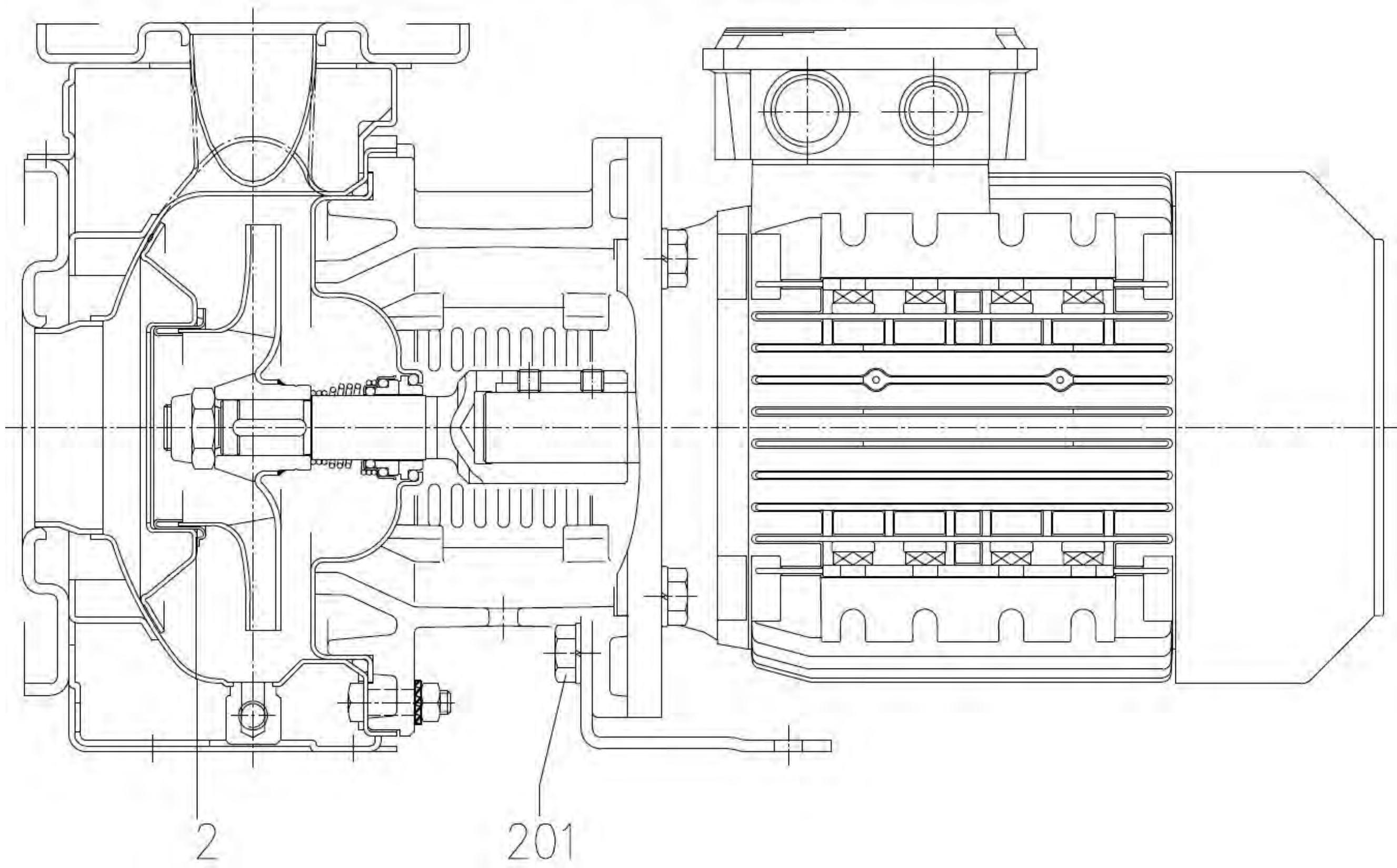


60 Hz



**- JH CENTRIFUGAL STAINLESS STEEL
MADE ELECTRIC PUMPS**

SECTIONAL VIEW DRAWING



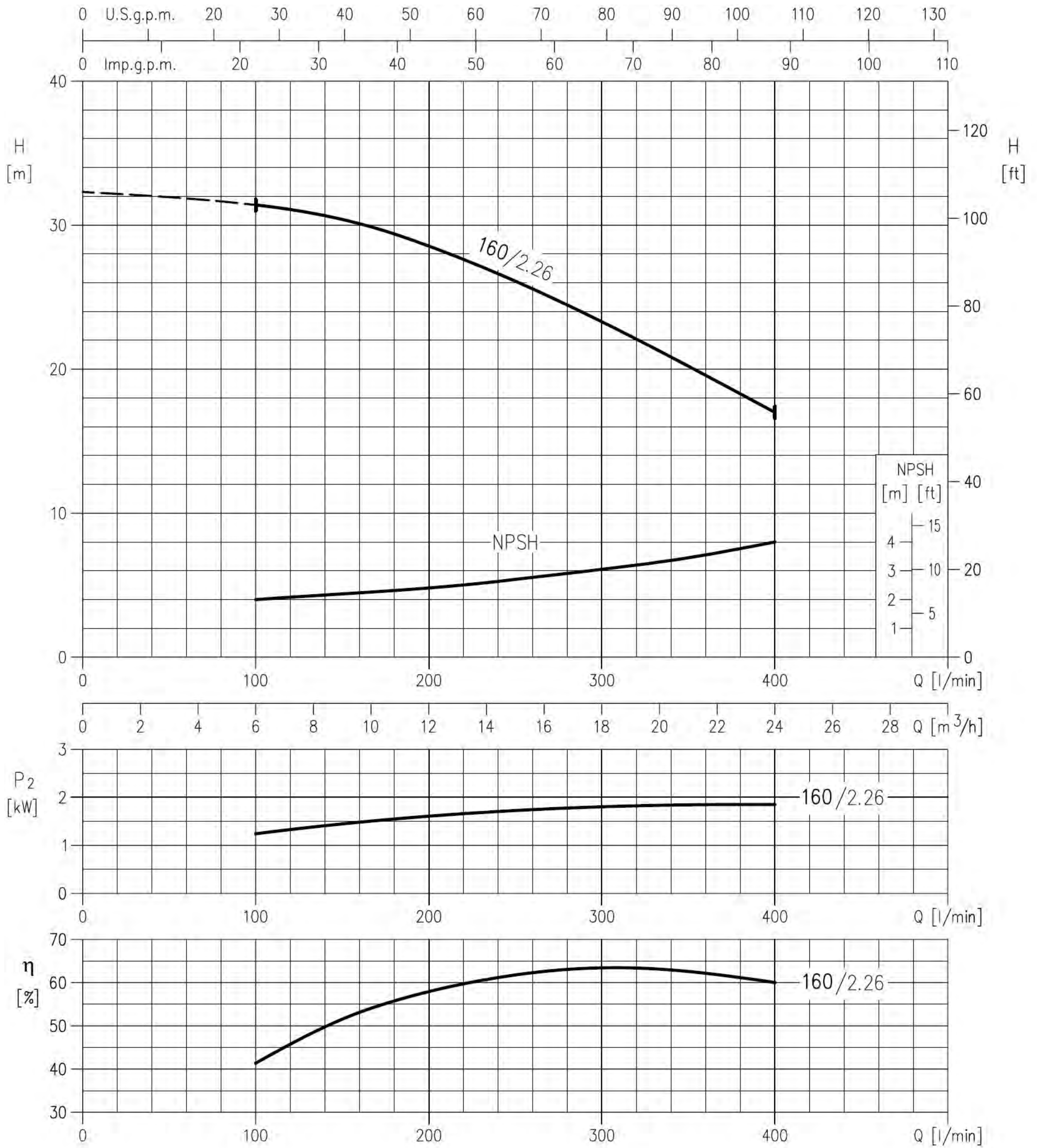
CENTRIFUGAL PUMPS

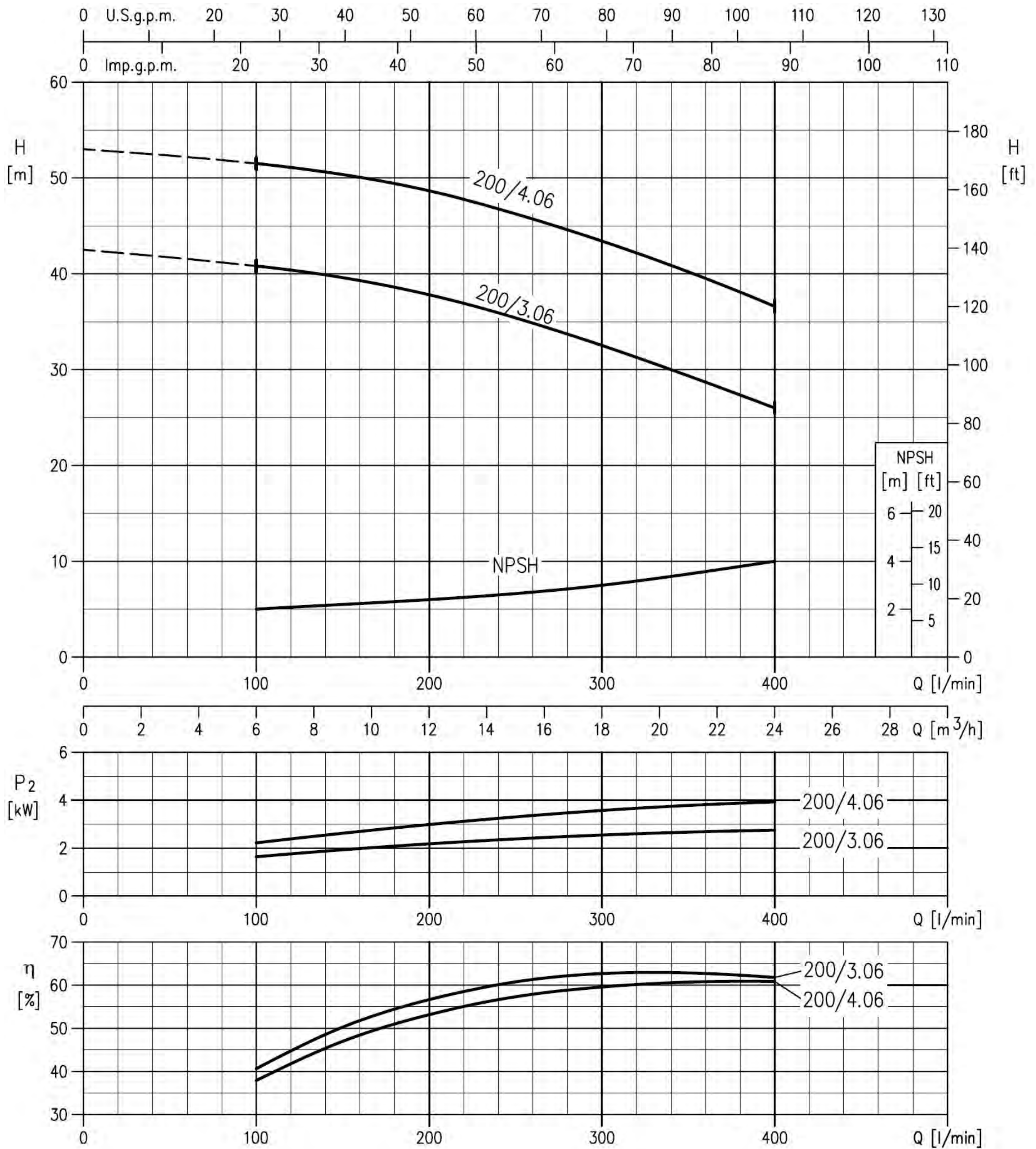
JH

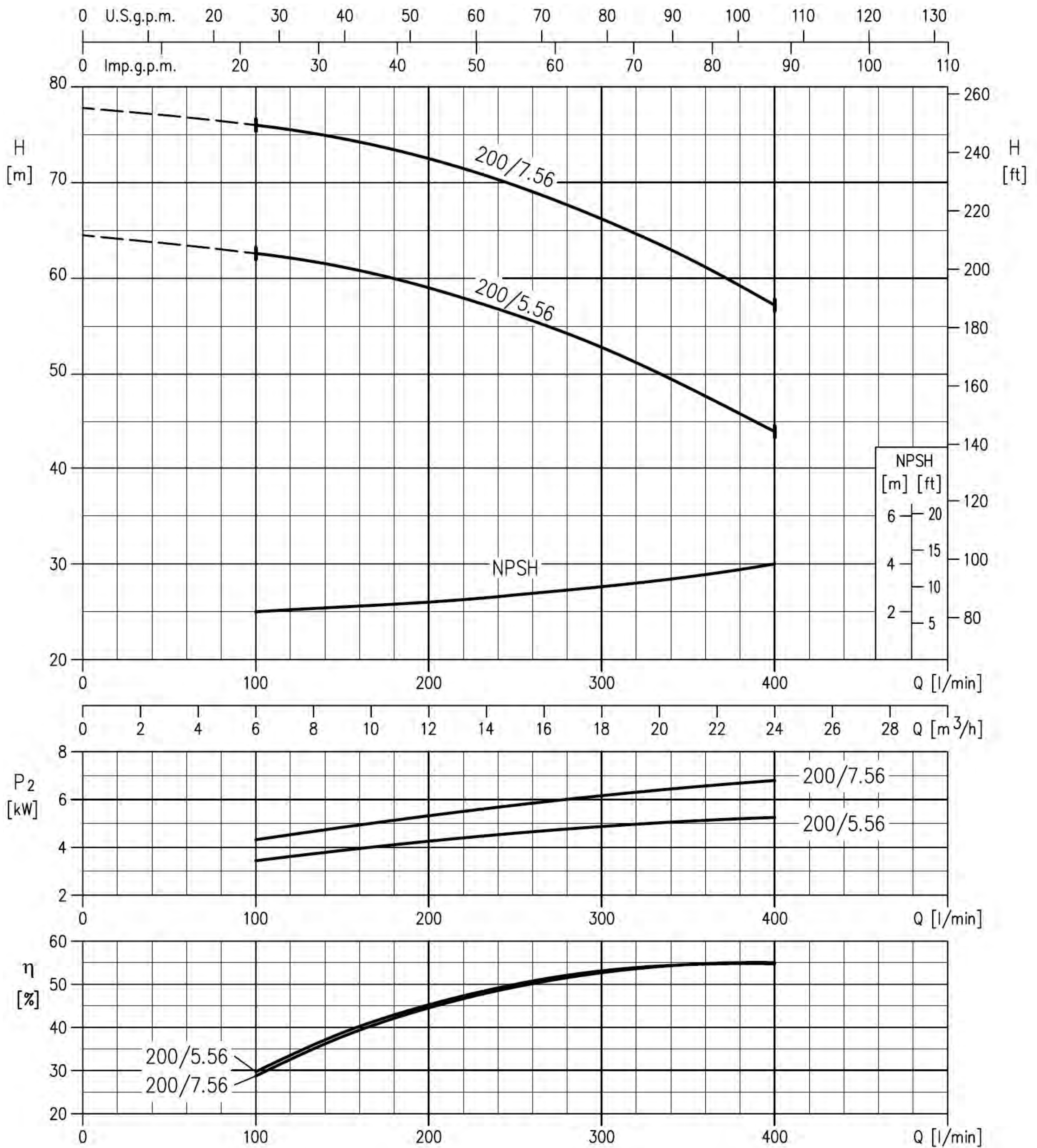
CONSTRUCTION

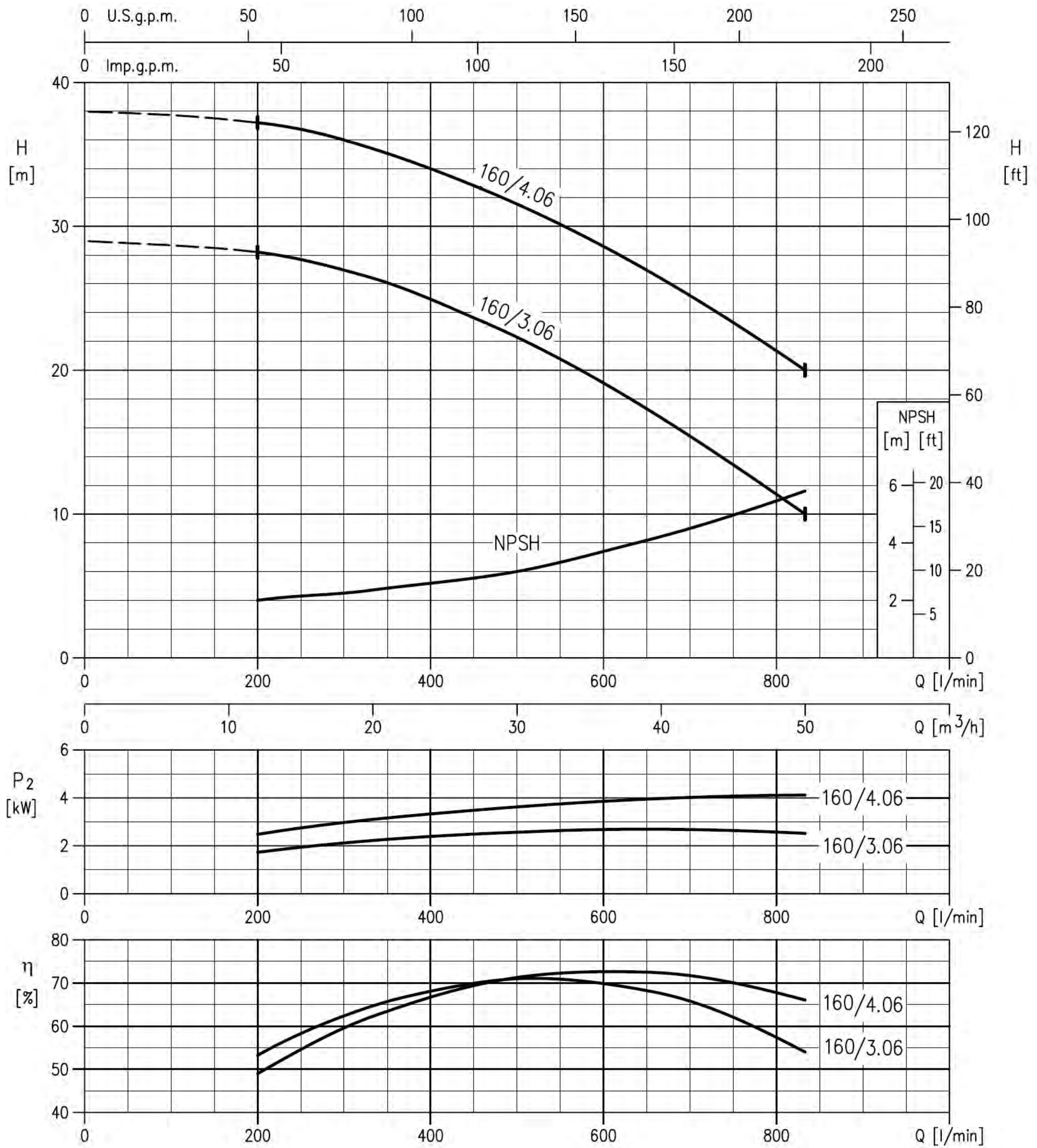
SECTIONAL VIEW TABLE

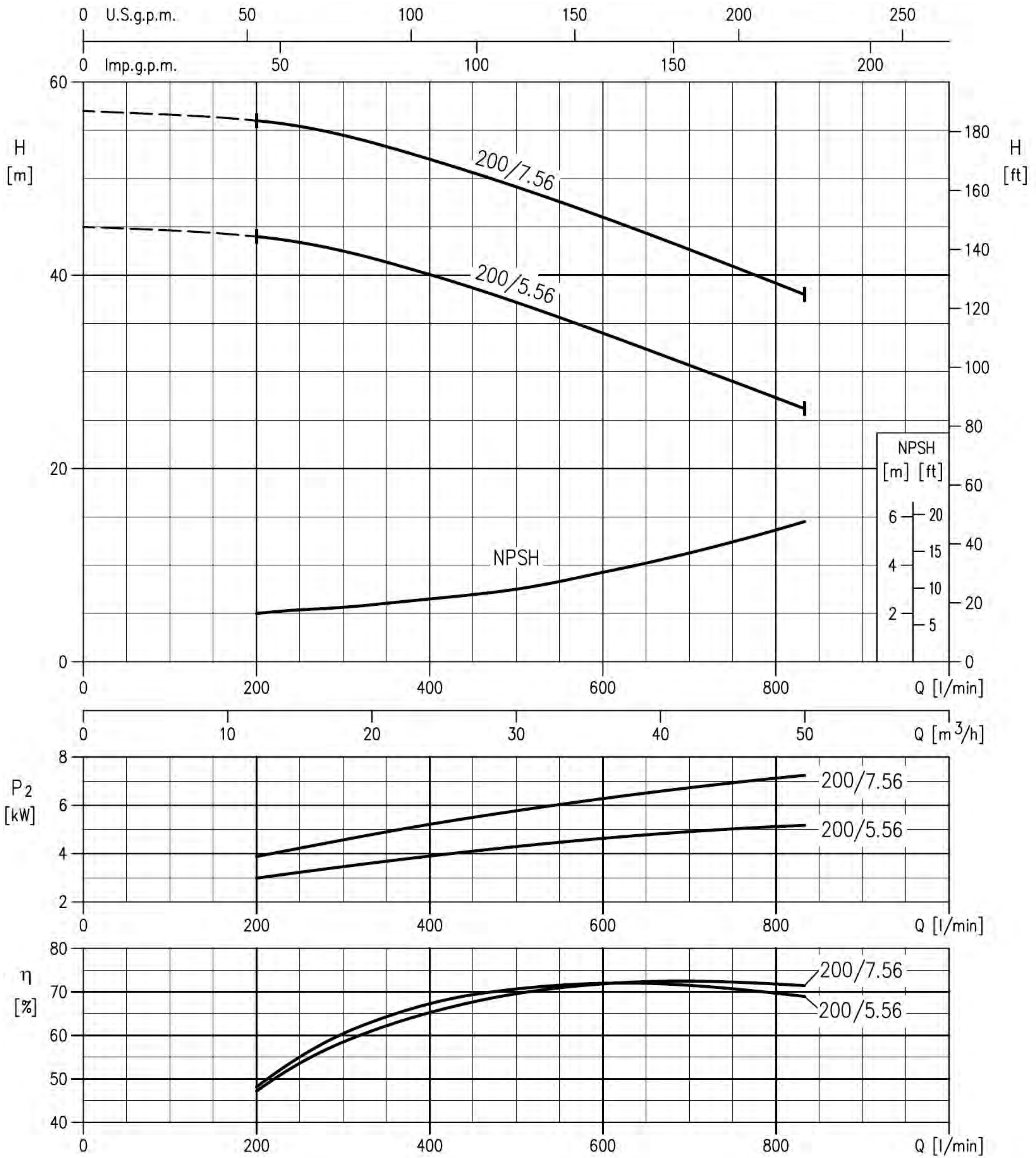
N	PART NAME		MATERIAL		Q'TY
			304SS	316L	
001	Casing		EN 1.4301 (AISI 304)	EN 1.4404 (AISI 316L)	1
002	Teflon necking (32-40-50)		Teflon		1
003	Motor bracket		Carbon Steel		1
004	Casing cover		EN 1.4301 (AISI 304)	EN 1.4404 (AISI 316L)	1
006	Coupling - Part in contact with liquid		EN 1.4301 (AISI 304)	EN 1.4404 (AISI 316L)	1
007	Impeller		EN 1.4301 (AISI 304)	EN 1.4404 (AISI 316L)	1
011	Mechanical seal		Carbon/Ceramic/NBR	SiC/SiC/FPM	1
012	Motor		***		1
025	Draing plug		304SS		1
026	"O" ring		NBR (8)	FPM	1
032	Key	Up to 11 kw	304SS		1
		15 kw and above			
034	Impeller nut		EN 1.4301 (AISI 304)	EN 1.4404 (AISI 316L)	1
042	Foot		Aluminium / Galvanized steel		2
044	Protection		EN 1.4301 (AISI 304)		1
072	Casing ring (3)		EN 1.4301 (AISI 304)	EN 1.4404 (AISI 316L)	1
073	Casing ring (not for 65 version)		EN 1.4301 (AISI 304)	EN 1.4404 (AISI 316L)	1
200	Screw	32-125, 40-125	Stainless steel A2 70 class ISO 3506/1		8
		50-200, 65-125, 65-160, 65-200			4
201	Screw		Galvanized Steel 8.8 strenght class ISO 898/1		5
206	Screw for bracket		304SS		4
235	Washer		Stainless steel A2 70 Class ISO 3506/1		8

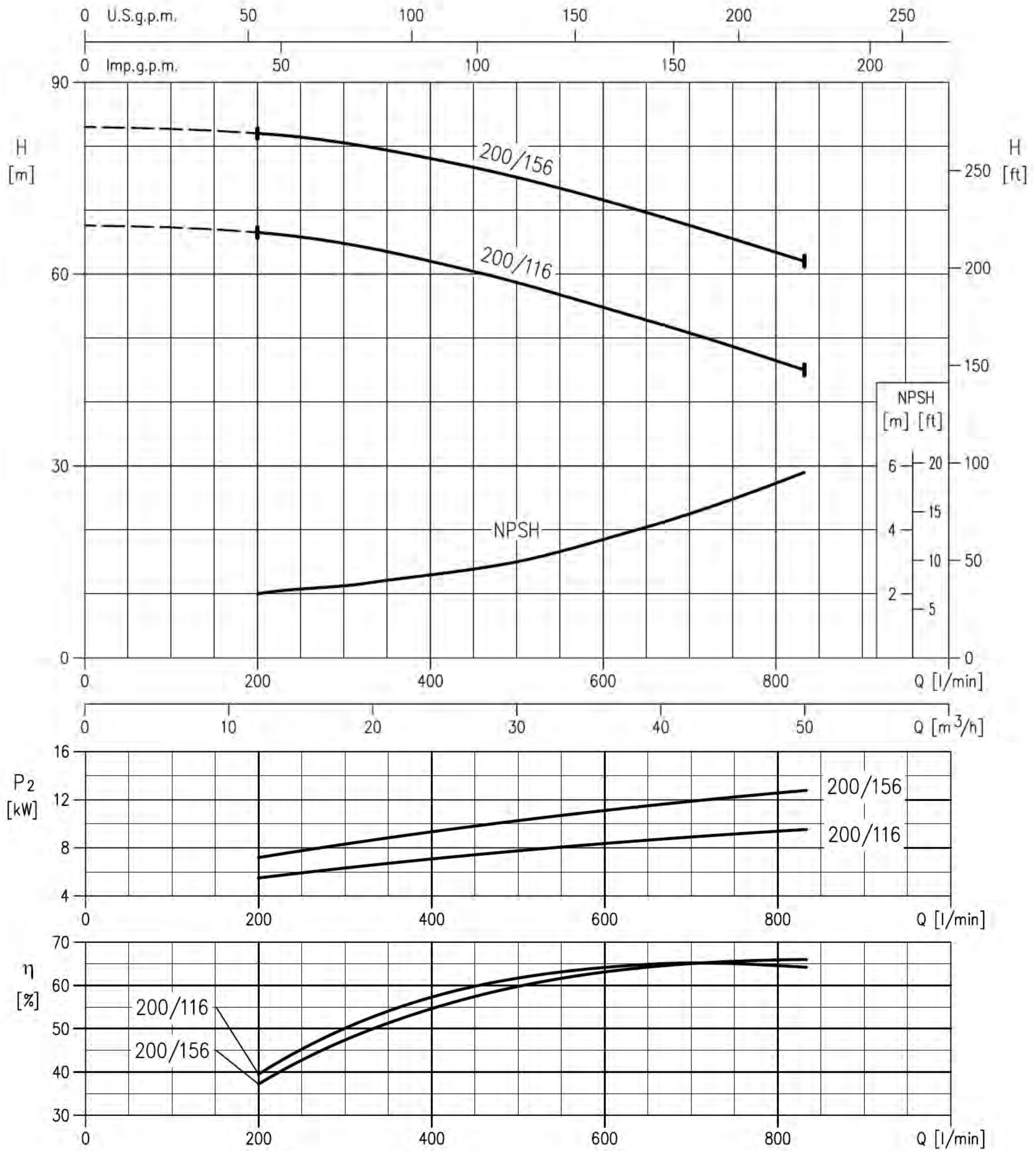








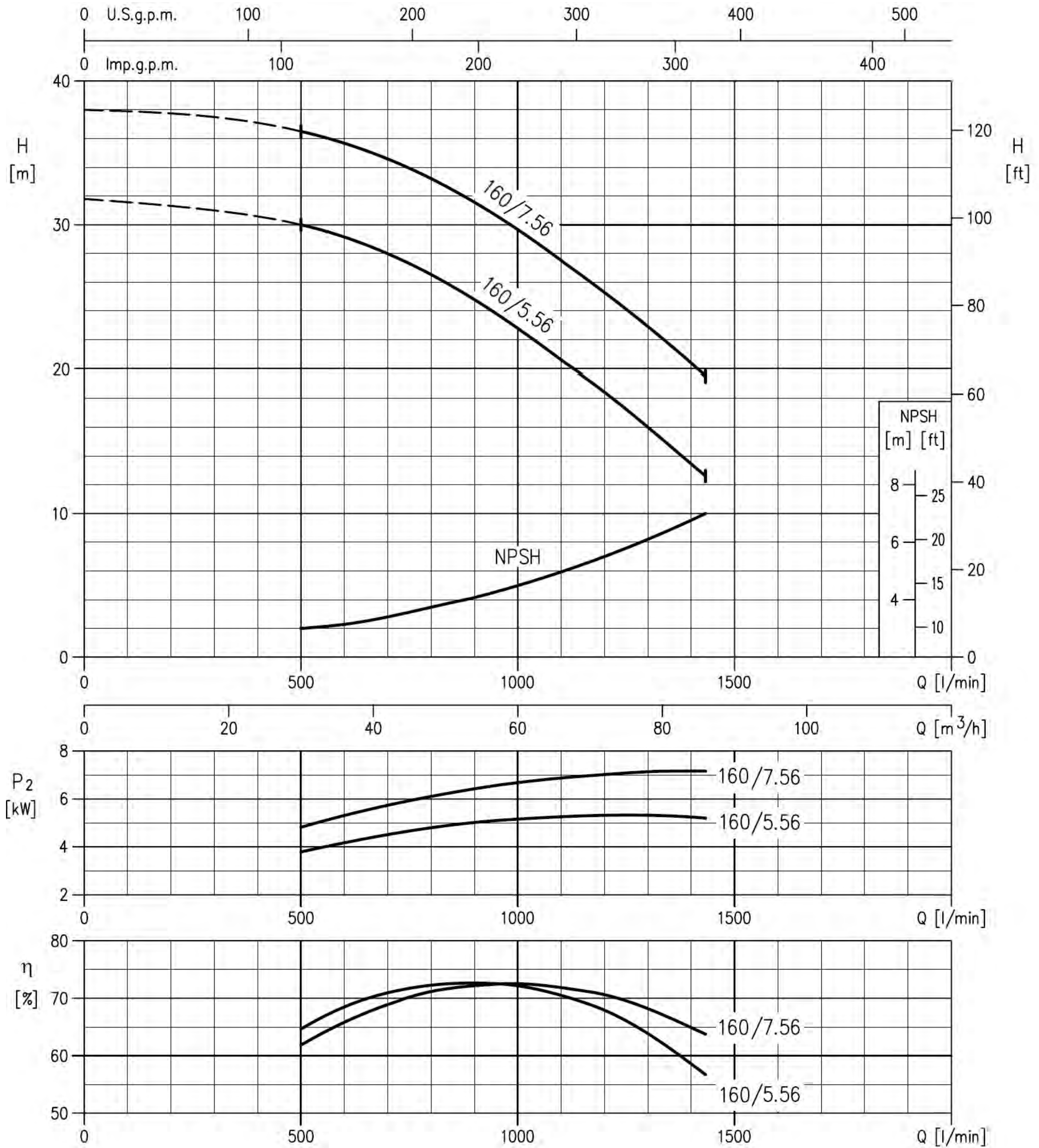




PERFORMANCE CURVE **50**

60Hz

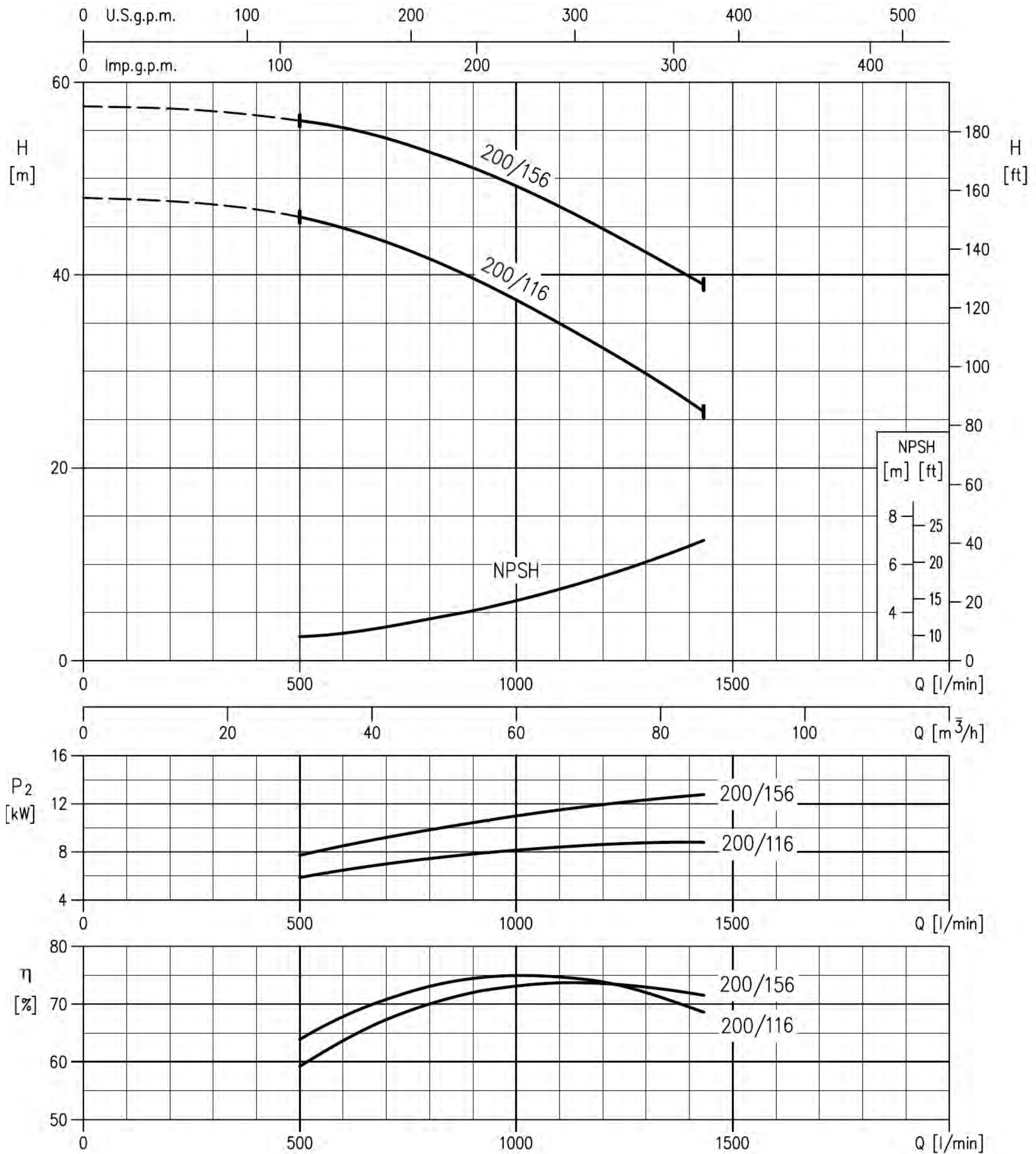
Rev. R

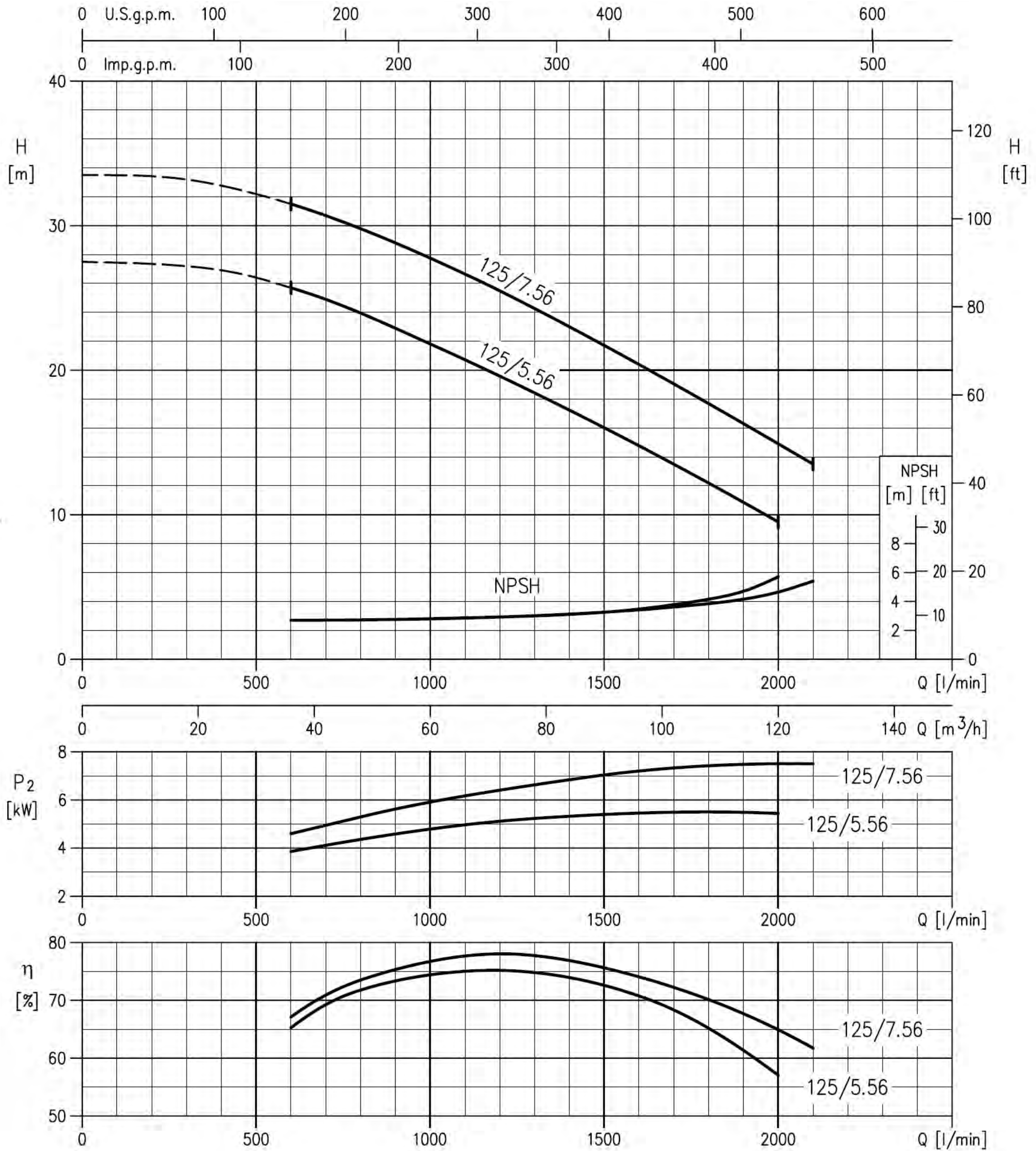


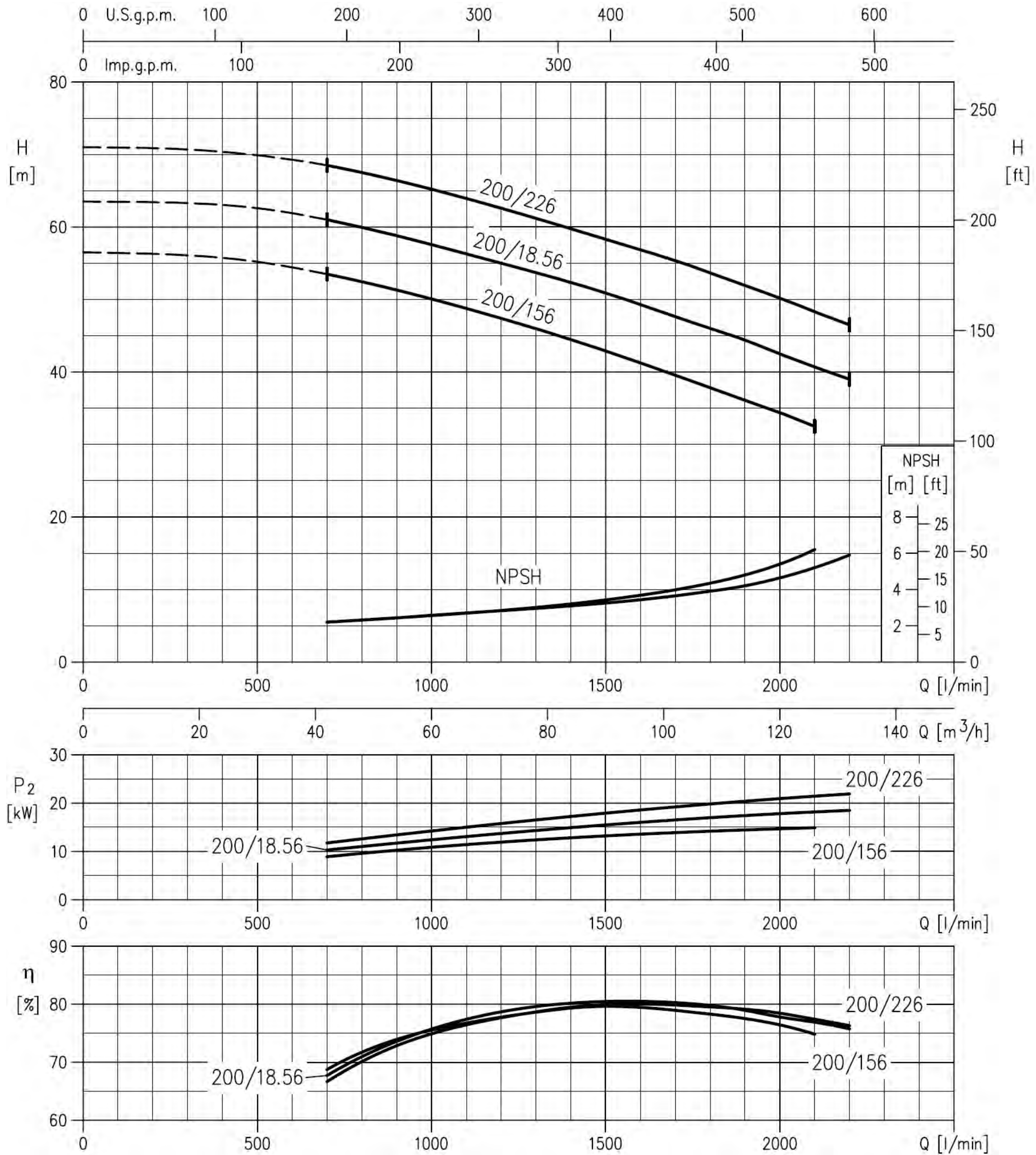
PERFORMANCE CURVE 50

60Hz

Rev. R



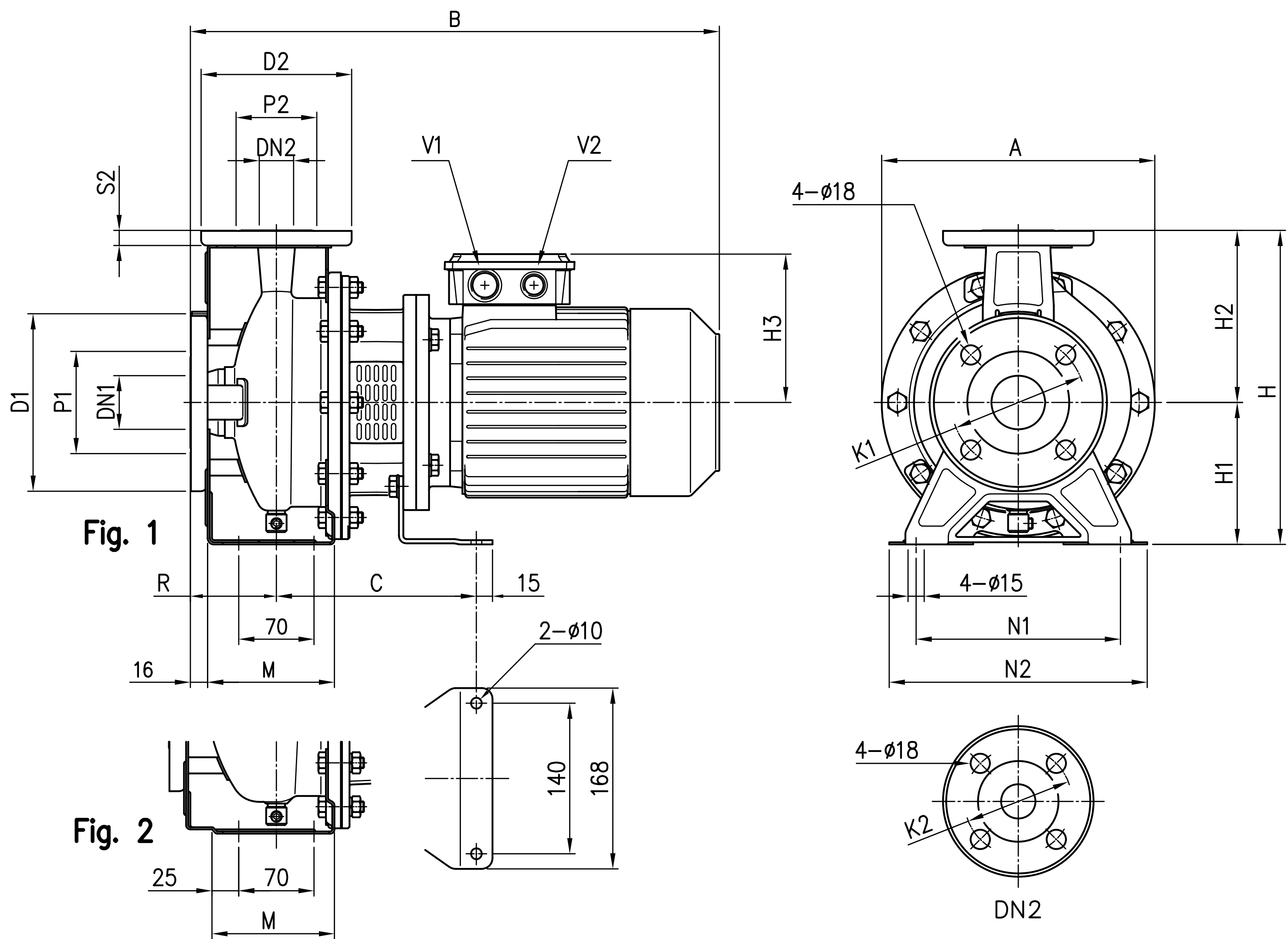




CENTRIFUGAL PUMPS

JH

PERFORMANCE CURVE

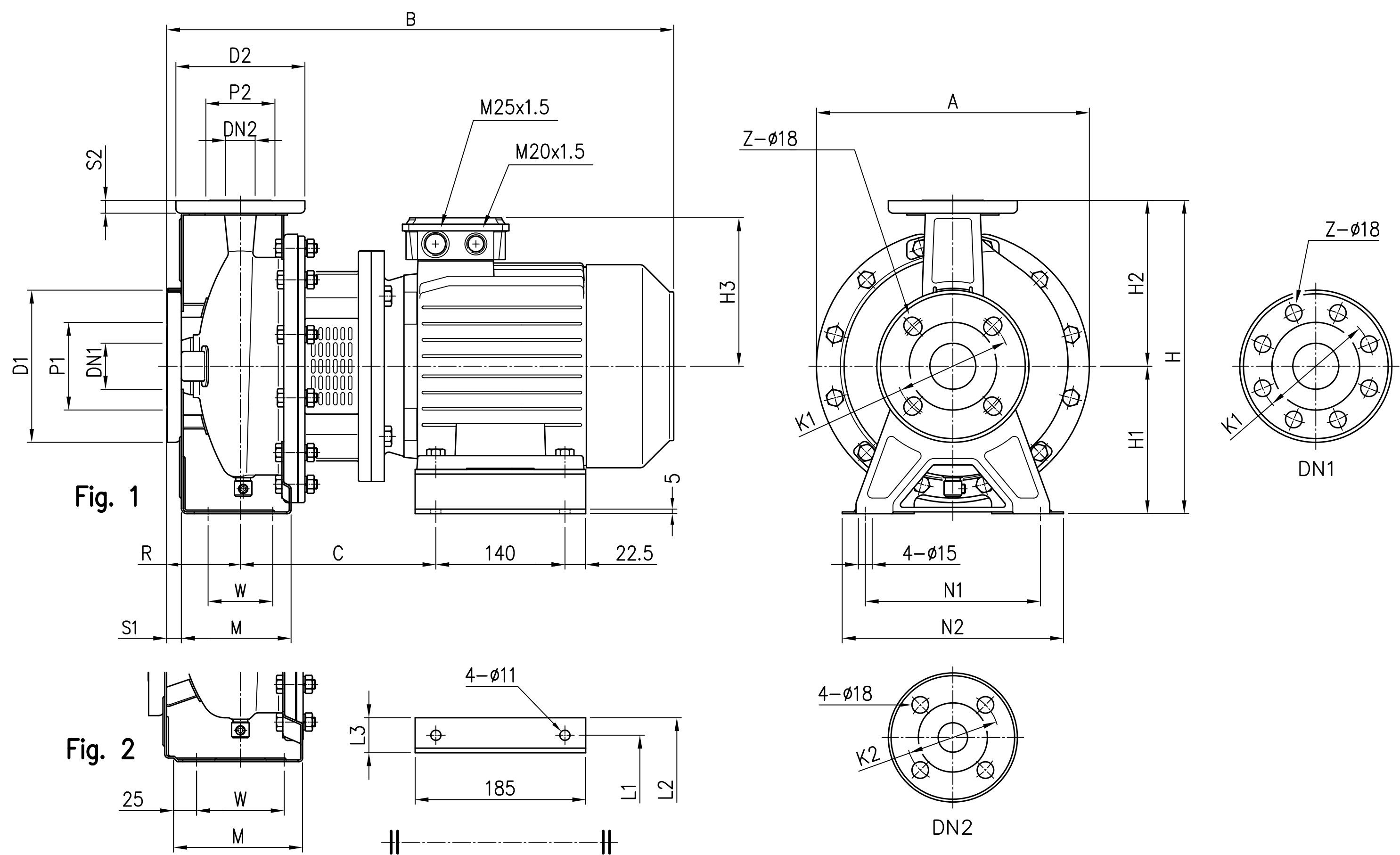


Model	Dimensions (mm)																					Weight (kgf)		
	∅ DN1	∅ P1	∅ K1	∅ D1	∅ DN2	∅ P2	∅ K2	∅ D2	S2	Fig.	H	H1	H2	H3	R	M	N1	N2	A	B	C		V1	V2
32-160/2.2	50	95	125	165	32	75	100	140	14	1	292	132	160	148	80	118	190	240	244	477	186	M25x1.5	M20x1.5	32

CENTRIFUGAL PUMPS

JH

PERFORMANCE CURVE

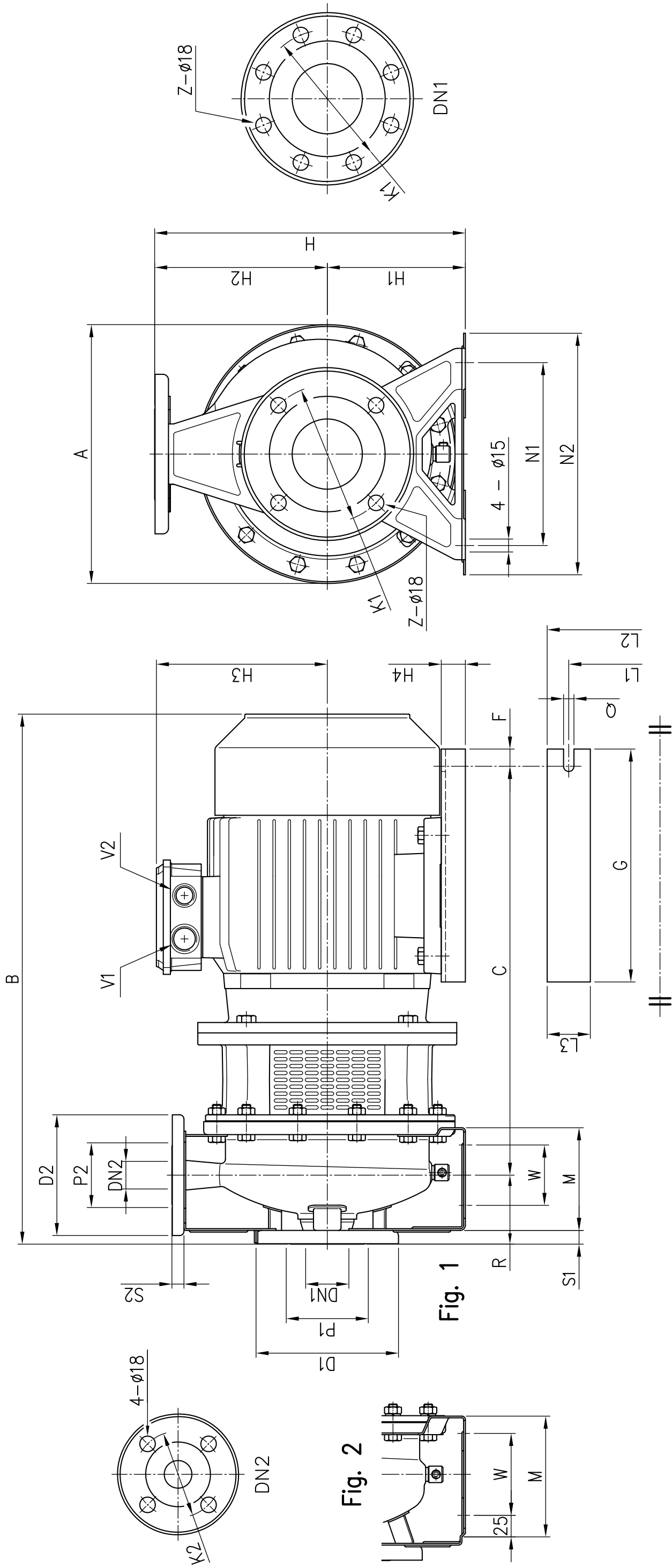


Model	Dimensions (mm)																										Weight (kgf)		
	∅ DN1	∅ P1	∅ K1	∅ D1	S1	Z (1)	Z (2)	∅ DN2	∅ P2	∅ K2	∅ D2	S2	Fig.	H	H1	H2	H3	R	W	M	N1	N2	A	B	C	L1		L2	L3
32-200/3.0	50	95	125	165	16	4	*	32	75	100	140	14	1	340	160	180	155	80	70	119	190	240	295	528	205	160	202	42	47
32-200/4.0	50	95	125	165	16	4	*	32	75	100	140	14	1	340	160	180	171	80	70	119	190	240	295	550	212	190	228	38	49

CENTRIFUGAL PUMPS



PERFORMANCE CURVE



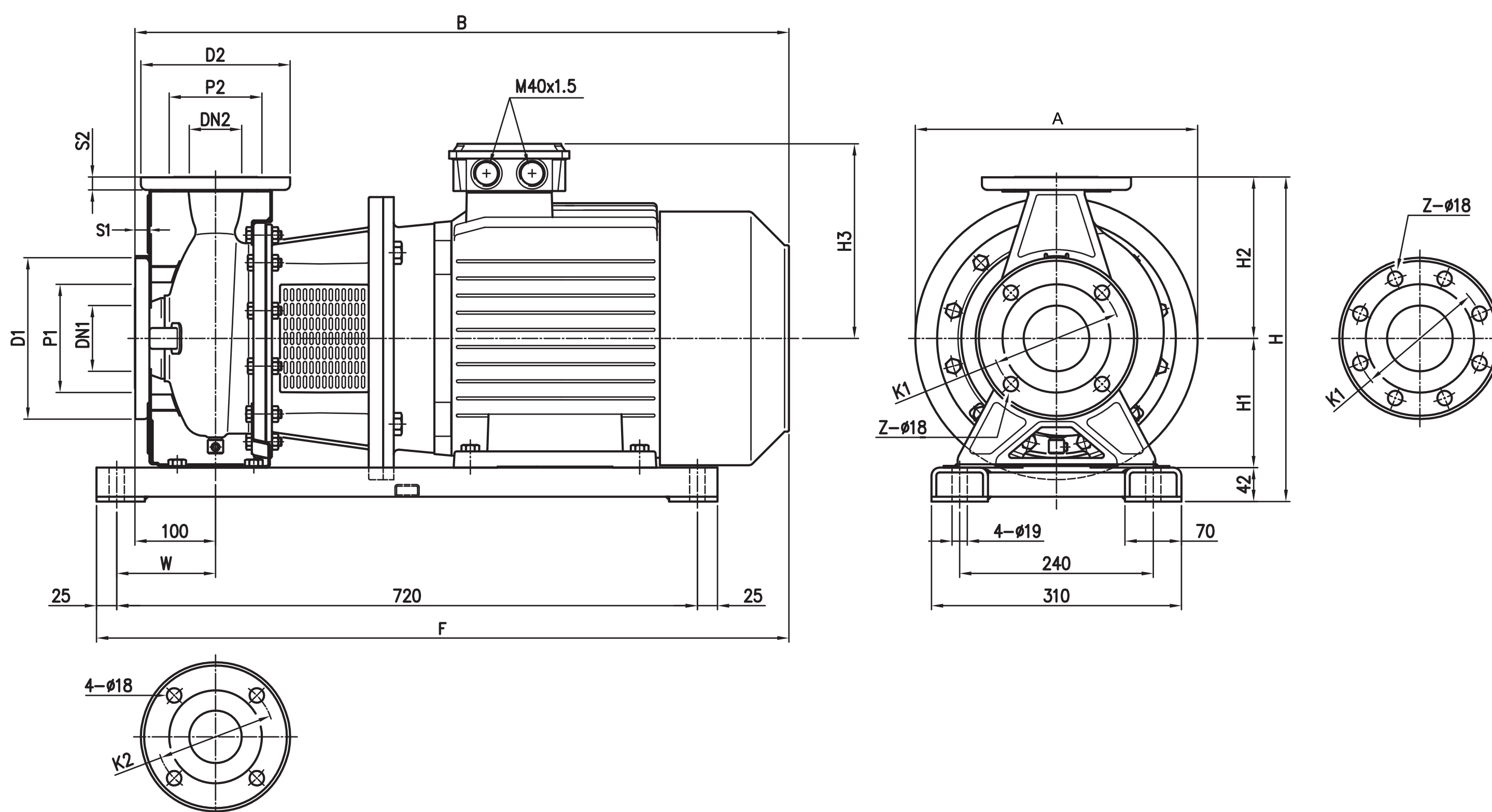
Dimensions (mm)

Model	Dimensions (mm)																		Weight (kgf)															
	Ø DN1	Ø P1	Ø K1	Ø D1	S1	Z	Ø DN2	Ø P2	Ø K2	Ø D2	S2	Fig.	H	H1	H2	H3	H4	R	W	M	N1	N2	A	B	C	F	G	Q	L1	L2	L3	V1	V2	
32-200/5.5	50	95	125	165	16	4	32	75	100	140	14	1	340	160	180	198	28	80	70	119	190	240	295	607	479	15	270	12	216	266	50	M32x1.5	M32x1.5	72
32-200/7.5	50	95	125	165	16	4	32	75	100	140	14	1	340	160	180	198	28	80	70	119	190	240	295	607	479	15	270	12	216	266	50	M32x1.5	M32x1.5	87
40-160/3.0	65	115	145	185	16	4	40	80	110	150	14	1	292	132	160	155	32	80	70	118	190	240	244	528	388	15	220	12	160	200	40	M25x1.5	M20x1.5	43
40-160/4.0	65	115	145	185	16	4	40	80	110	150	14	1	292	132	160	171	20	80	70	118	190	240	244	550	395	15	220	12	190	240	50	M25x1.5	M20x1.5	45
40-200/5.5	65	115	145	185	16	4	40	80	110	150	14	2	340	160	180	198	28	100	70	115	212	265	295	627	479	15	270	12	216	266	50	M32x1.5	M32x1.5	72
40-200/7.5	65	115	145	185	16	4	40	80	110	150	14	2	340	160	180	198	28	100	70	115	212	265	295	627	479	15	270	12	216	266	50	M32x1.5	M32x1.5	82
40-200S/11	65	115	145	185	16	4	40	80	110	150	14	2	340	160	180	198	28	100	70	115	212	265	295	650	479	15	270	12	216	266	50	M32x1.5	M32x1.5	82
50-160/5.5	65	115	145	185	16	4	50	95	125	165	16	2	340	160	180	198	28	100	70	115	212	265	244	627	479	15	270	12	216	266	50	M32x1.5	M32x1.5	64
50-160/7.5	65	115	145	185	16	4	50	95	125	165	16	2	340	160	180	198	28	100	70	115	212	265	244	627	479	15	270	12	216	266	50	M32x1.5	M32x1.5	91
50-200S/11	65	115	145	185	16	4	50	95	125	165	16	2	360	160	200	198	28	100	70	115	212	265	295	650	479	15	270	12	216	266	50	M32x1.5	M32x1.5	91
65-125/5.5	80	134	160	200	18	8	65	115	145	185	16	2	340	160	180	198	28	100	95	140	212	280	245	627	479	15	270	12	216	266	50	M32x1.5	M32x1.5	60
65-125/7.5	80	134	160	200	18	8	65	115	145	185	16	2	340	160	180	198	28	100	95	140	212	280	245	627	479	15	270	12	216	266	50	M32x1.5	M32x1.5	80
65-200/15	80	134	160	200	18	8	65	115	145	185	16	2	405	180	225	238	20	100	95	140	250	320	301	806	621	20	350	14	254	314	60	M40x1.5	M40x1.5	138
65-200/18.5	80	134	160	200	18	8	65	115	145	185	16	2	405	180	225	238	20	100	95	140	250	320	301	850	621	20	350	14	254	314	60	M40x1.5	M40x1.5	138
65-200/22	80	134	160	200	18	8	65	115	145	185	16	3	405	180	225	268	*	100	*	*	250	320	301	885	*	*	*	*	*	*	*	M32x1.5	M32x1.5	175

CENTRIFUGAL PUMPS



PERFORMANCE CURVE



Model	Dimensions (mm)																				Weight (kgf)
	∅ DN1	∅ P1	∅ K1	∅ D1	S1	Z (1)	Z (2)	∅ DN2	∅ P2	∅ K2	∅ D2	S2	H	H1	H2	H3	W	A	B	F	
40-200/11	65	115	145	185	16	4	*	40	80	110	150	14	382	160	180	238	110	295	796	831	118
40-200/15	65	115	145	185	16	4	*	40	80	110	150	14	382	160	180	238	110	295	796	831	138
50-200/11	65	115	145	185	16	4	*	50	95	125	165	16	402	160	200	238	110	295	796	831	118
50-200/15	65	115	145	185	16	4	*	50	95	125	165	16	402	160	200	238	110	295	796	831	148